

Kennecott Land  
 4700 Daybreak Parkway  
 South Jordan, Utah 84095  
[www.daybreakutah.com](http://www.daybreakutah.com)  
[www.kennecottland.com](http://www.kennecottland.com)  
[www.riotinto.com](http://www.riotinto.com)

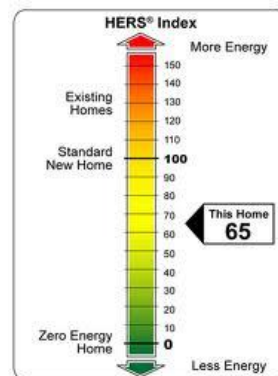


For immediate release  
 Media Contact:  
 Cameron Jackson  
 Marketing Manager  
 (801) 204-2763  
[cameron.jackson@riotinto.com](mailto:cameron.jackson@riotinto.com)

## News Release

### Daybreak Sets Standards For Using New Energy Efficiency Programs Saving Homebuyers Energy and Money

*HERS and Energy Star 3.0 put Daybreak in national energy efficiency spotlight*



Tuesday, August 9, 2011

(South Jordan – UT) – Rio Tinto’s Kennecott Land recently signed on to two new energy efficiency programs placing the Daybreak community in the national energy efficiency spotlight. The Home Energy Rating System (HERS) Index and the Energy Star 3.0 programs provide consumers with the tools they need to ensure they purchase energy efficient homes that meet their expectations. Daybreak’s energy efficient homes is showcased during the 2011 Parade of Homes, which runs until August 14.

“Daybreak is leading the nation in building highly energy efficient homes while demonstrating our commitment to social and economic sustainability,” said Ty McCutcheon, Vice President of Community Development at Rio Tinto.

The HERS Index rates each home's energy efficiency on a scale from 0-100 (a standard new home has a rating of 100 and a rating of 0 indicates a home uses not net purchased energy). Many Daybreak homes have a HERS score in the 60's, significantly lower than most new homes. Most used homes built before 2006 have a score greater than 100, and a home built in the 1990's or earlier comes in at around 160 or 60% less efficient than a new home constructed to current state building code requirements. The HERS Index is similar to the miles-per-gallon rating found on windows of new car, and provides consumers with a user friendly tool to compare energy efficiency across a variety of homes, including existing homes. The HERS Index was created in cooperation with the U.S. Department of Energy (DOE) by Residential Energy Services Network (RESNET).

With utility costs perpetually on the rise, the DOE wants to familiarize the public with the HERS Index to assist them in making an informed decision about purchasing a home. A DOE certified rater can perform an evaluation of any home, much like a home inspection, and provide a HERS score to the homeowner. The homeowner can then use that information in making energy efficiency improvements to the home, or as a data point to share with realtors or perspective buyers of the home if they choose to sell it.

All Daybreak homes are verified by a third party DOE certified rating firm to ensure an accurate HERS score, and that the home has been designed and built as advertised. To help consumers become familiar with how to use the HERS Index as a comparison tool, Daybreak builders will begin displaying the HERS score on the front door or window of every new home later this year.

"A typical Daybreak home with a HERS rating of 80 will save a homeowner an average of \$140 per month in energy costs over a similarly sized used home built in the 1990's, and this is great news for cost conscious homebuyers in this tight economy," said McCutcheon.

Kennecott Land recently signed a Memorandum of Understanding with RESNET committing to publish and market the HERS score of each new home at the time of sale.

“This is an exciting opportunity for other land development companies interested in pursuing a sustainable community development. I laude Kennecott Land for its leadership,” said Steve Baden, RESNET Executive Director.

Daybreak is one of three communities in the nation, and the only one in the western United States, to implement the Environmental Protection Agency’s Energy Star 3.0 program. The Energy Star 3.0 program focuses on efficiency measures that better control the air flow, heat, and moisture within a home and is an indication of overall high quality home construction and high energy efficiency. Every home in Daybreak has been Energy Star certified since 2010, and all homes built at Daybreak will be Energy Star compliant by January 1, 2012.

**About Daybreak:**

Daybreak is the vision of Rio Tinto’s Kennecott Utah Copper/Kennecott Land to carry sustainable development out on a large scale. Daybreak is a fresh way of thinking about community. Made up of a wide variety of energy-efficient new homes as well as shops, restaurants, offices, schools, trails, parks and more, Daybreak brings all the elements of life within easy walking or biking distance and TRAX light rail makes Daybreak even more convenient with connectivity to downtown. The community is situated on 4,126 acres in South Jordan City and will eventually include as many as 20,000 homes and up to 14 million square feet of commercial space. Daybreak is located at 11400 S. & Bangerter Highway. To learn more about Daybreak, please visit [www.daybreakutah.com](http://www.daybreakutah.com) and [www.kennecottland.com](http://www.kennecottland.com).

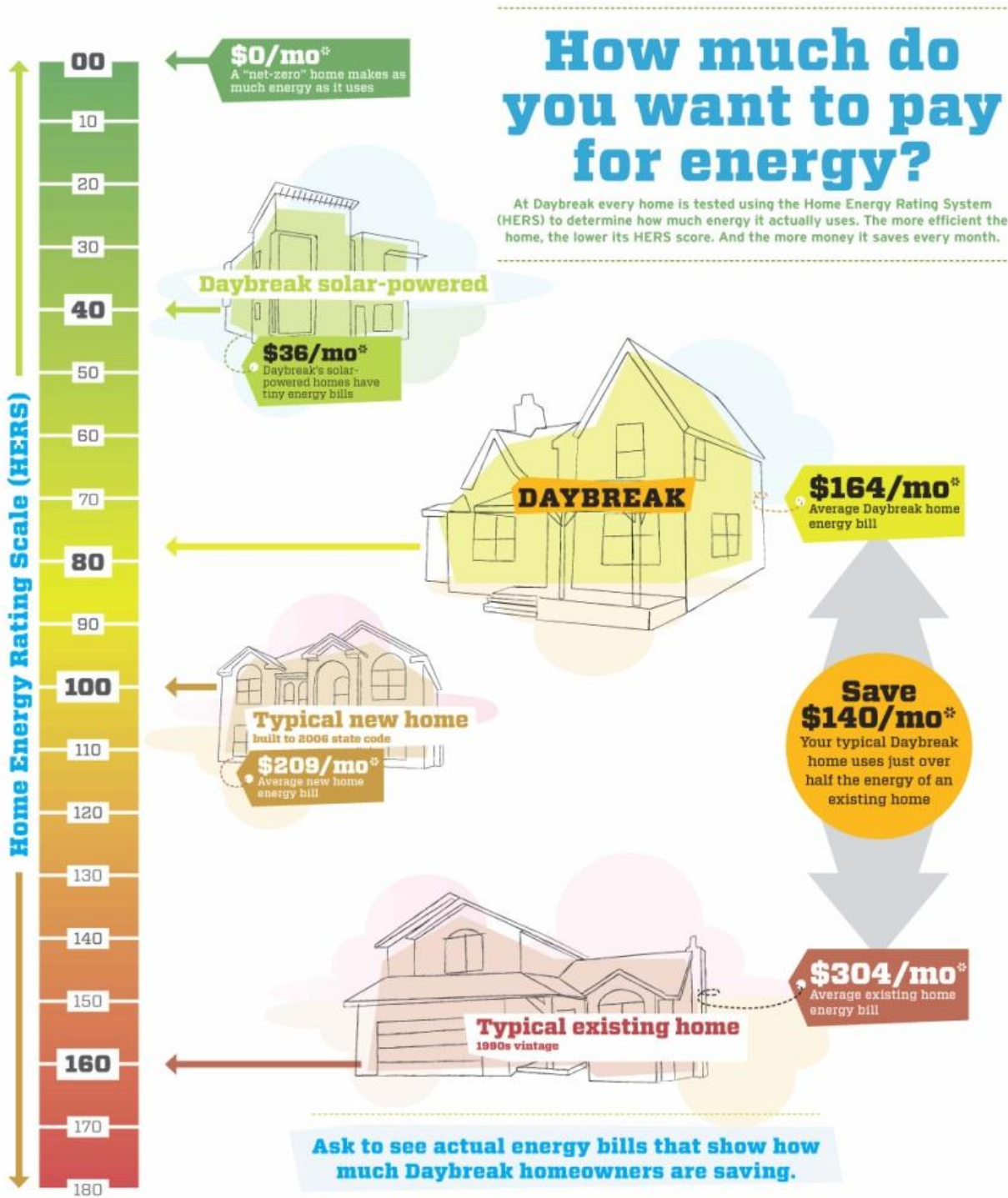
**About Rio Tinto and Kennecott Utah Copper**

As the second largest copper producer in the United States, Kennecott Utah Copper comprises nearly 25 percent of U.S. copper production. Kennecott’s Bingham Canyon Mine is one of the top producing copper mines in the world with total production at more than 19 million tons. In 2010, Kennecott produced approximately 296,000 tons of copper, 596,000 ounces of gold, 4.7 million ounces of silver, 28 million pounds of molybdenum and other products. Rio Tinto purchased the Bingham Canyon Mine and related facilities in 1989 and has invested more than \$2 billion in the modernization since then. KUC has also spent more than \$350 million on the cleanup of historic mining waste and \$100 million on groundwater cleanup. Rio Tinto employs 2,400 people and influences 14,800 indirect Utah jobs and spends \$1 billion in the state of Utah in wages, benefits, taxes and purchases from nearly 1,000 Utah area businesses every year. [www.kennecott.com](http://www.kennecott.com). Rio Tinto is a leading international mining group headquartered in the United Kingdom, combining Rio Tinto plc, a London and NYSE listed company, and Rio Tinto Limited, which is listed on the Australian Securities Exchange. Rio Tinto's business is finding, mining, and processing mineral resources. Major products are aluminium, copper, diamonds, energy (coal and uranium), gold, industrial minerals (borax, titanium dioxide, salt, talc) and iron ore. Activities span the world but are strongly represented in Australia and North America with significant businesses in South America, Asia, Europe and Southern Africa. [www.riotinto.com](http://www.riotinto.com)

###

Additional Information

HERS Poster



\* Home Buyers should consult the Energy Star certificate for their individual home to verify the energy efficiency of their specific home. The HERS scoring and projected cost savings are averages, and individual results will vary. Kerescott Land/Rio Tinto makes no representation or warranty that savings of any particular amount will be realized. Your savings will vary depending on weather and other factors ... like how good you are about turning off the lights when you leave the room.

HERS Window Cling

DAYBREAK<sup>®</sup>

**HERS  
score** **40**

**You save**  
**\$209**  
 per month  
**on energy\***

**LEARN MORE** ▶

\*Compared to typical existing home.  
 Actual savings may vary.

HERS Energy Label

DAYBREAK<sup>®</sup>

**Certified  
Energy Savings**

for 10482 S. Silver Mine Rd

Home Energy Rating Scale (HERS)



**THIS HOME**  
**saves you**  
**\$159**  
 per month  
**on energy\***

- Certified to meet all requirements for the current Energy Star<sup>®</sup> standard.
- High-efficiency heating and cooling system with sealed ducting and programmable thermostat.
- Superior thermal enclosure including high-performance insulation, air sealing features and windows.
- Energy Star-qualified appliances and lighting.

\*Compared to the typical existing home. The HERS scoring and projected cost savings are averages, and individual results will vary. Kerescott Land/RioTinto makes no representation or warranty that savings of any particular amount will be realized. Your savings will vary depending on weather and other factors.